

The project is co-promoted by a Consortium of the
"Akshara Group",
"Tirupati Group" &
"Shrachi Group"
 and they have promoted the following projects jointly.

Seven Villas at Rowland Road.
Akshara Eden at Alipore Park Road
Akshara Park View, Akshara Green View,
 on NSC Bose Road, Tollygunge,

Akshara Green View, NSC Bose Road



Seven Villas, Rowland Road

Palm View, NSC Bose Road



The Groups forthcoming projects include the following:

Akshara Swiss Court at James Long Sarani - a 80,000 Sq.ft. project near M.P. Birla School.

Akshara Garden at 29, Broad Street - a 30,000 Sq.ft. Residential cum Commercial Project.

Akshara Gold at Kankurgachi - Residential Project in the North.

Akshara Whispering Willows at Rajarhat - 1Lac Sq.ft. project on the Proposed Eastern Expressway.

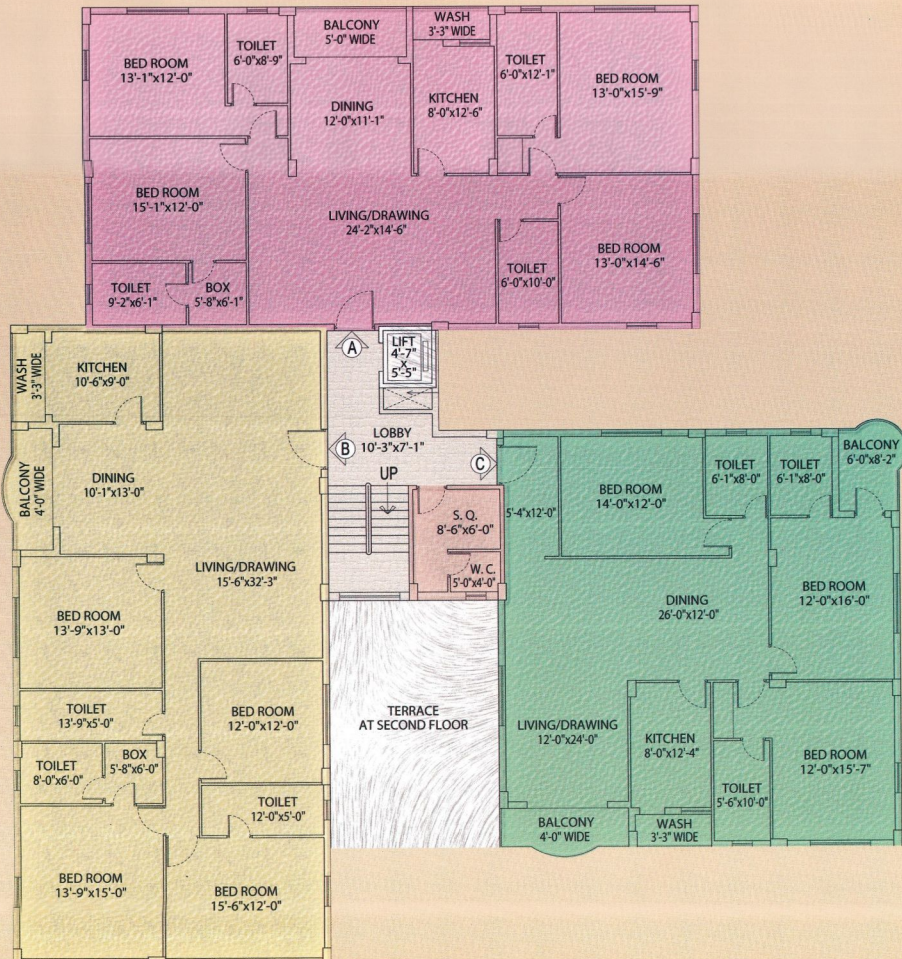
Akshara Gleneagles - Shopping Mall at Narendrapur

In Addition the groups have separately promoted the following projects: Lee Residency, Akshara Willow, Palm View, Sreekunj, Pretoria Manor, Akshara Residency, South City, Greenwood Sonata, Block by Block (New Town).

**Akshara
 Details**
 Homes
 that come alive with you



Typical floor plan



Typical Floor Plan

AREA CALCULATION (SFT)

FLAT MKD.	BED ROOM	SUPERBUILT-UP AREA
A	4	2510
B	4	2551
C	3	2142



Doors and Windows

- Good quality flushed door
- Sliding aluminium windows with white glass panel

Floors

- Entrance lobby - elegantly designed in marble
- Floor lobby - ceramic tiles
- Flat interior marble/vitrified tiles

Brick Walls

- External 8"
- Internal 5"/3"

Toilets

- Anti skid ceramic tiles floor, ceramic tiles upto door height on walls.
- Hot and cold line shower and basin, fittings of reputed brand

Electricals

- Concealed copper wiring of ISI brand
- Switches of reputed brand
- 1st Bedroom - 2 light points, 1 fan point, 2 power points of 5 amp and 1 AC point
- Living and Dining Area = 3 light points, 1 fan point Living hall and 2nd bedroom - TV and Telephone points 15 Amp power points
- Adequate electrical points

Elevators

- Adequate elevators with capacity of six passengers, of reputed brand

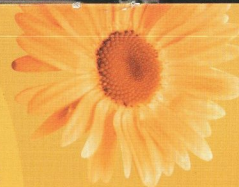
Finishings

- Exterior - High quality paint
- Interior - Plaster of Paris

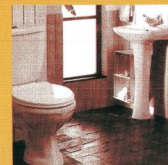
Kitchens

- Counter table with granite top & stainless steel sink. Ceramic tiles dado of 2 ft. above counter

Akshara
Details
Homes
that come alive with you



Superior Specification





Easy in Easy out

- Located 5 minutes from Ballygunge Phari
- Railway Station at a stone throw distance
- Merto Station within 4 kms
- Restaurants at adjoining areas
- Schools and colleges nearby
- Easily accessible to the best nursing homes like AMRI etc.
- Shortcut ways to Eastern Bypass
- Happening market places within 1 km
- Day to Day local market within 0.1 km



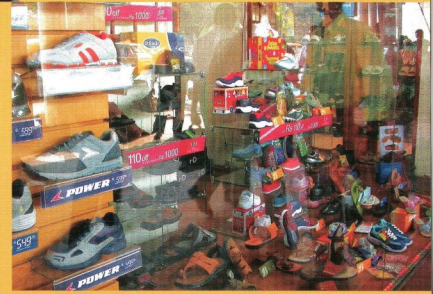
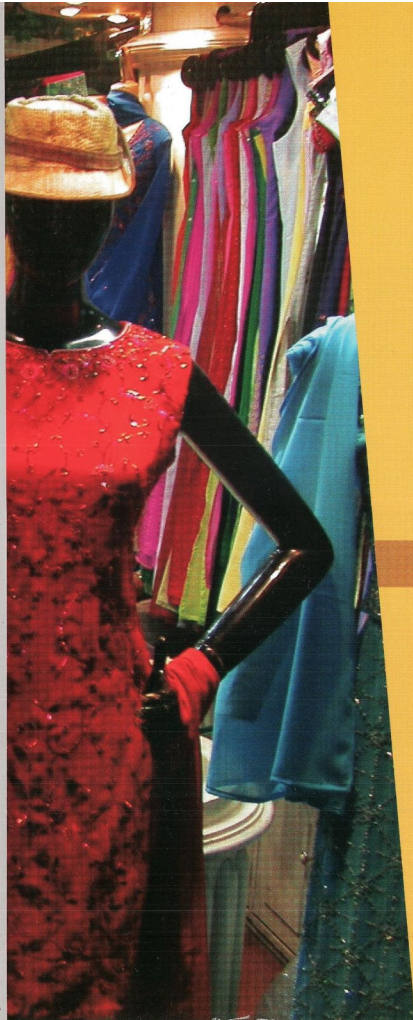
**Akshara
Details**
Homes
that come alive with you



Residential Amenities

- 24 hours security
- 24 hours water supply
- Elevators
- Common Terrace
- Marble floored Lobby
- Car Parking Space





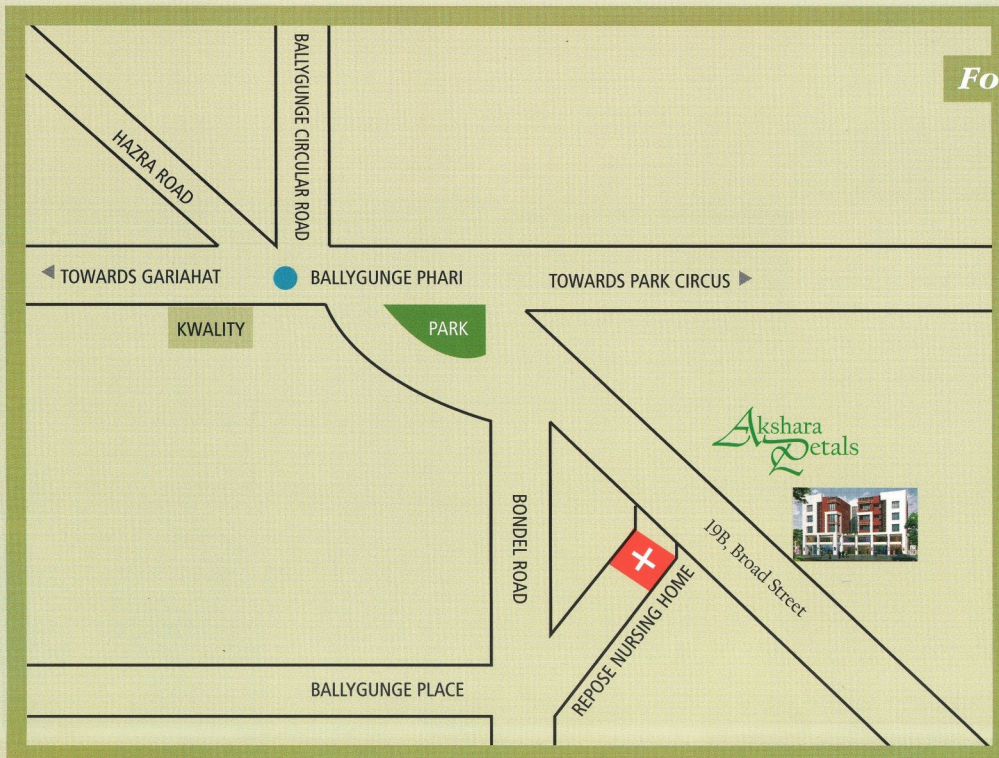
Retail Amenities

- Car Parking Space
- Elevators
- 24 hours security
- 24 hours water supply
- Ground and first floor convenience
- High Income Neighbourhood

**Akshara
Petals**
Homes
that come alive with you



For the privileged few



Akshara Petals is located just off the popular Ballygunge Phari with its many shops, restaurants and transport amenities. It's a property that is in the middle of Broad Street with 9 residential apartments and the ground and first floor reserved for retail outlets. A great opportunity for a stylish property in the middle of the city.